

Sold

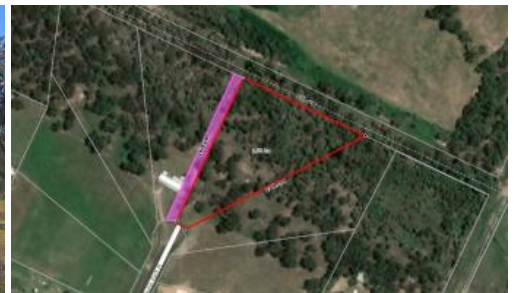
**Government
Grants &
Incentives Still
available**



LOT 15 Paulin Park Pl, Tinana

Paulin Park Place — Acreage Lots Selling Fast

1.22ha Elevated Lot. Limited Availability



Only 3 Blocks Remaining

Paulin Park Place - Lot 15

Lot 15 Paulin Park Place offers you 3 acres slightly larger than most and is available for you to have walk over. This block does offer a narrow frontage but the block opens up wider towards the back boundary, suited for a private and secluded bush land setting. Come and build your dream home and enjoy the wide open space with plenty of scope for you to decide how best this block can service the ideal home. Sitting at the end of the cul-de-sac and provides a great elevated block with a small slope. Location is high and dry and close to all the amenities that Tinana has to offer including school, shopping complex, tavern and sporting fields plus easy access to the Pacific Coast Way for when you want to "Getaway". All within minutes of the Maryborough CBD and gateway to Fraser Island.

Build the home that you want with no covenants in place telling you what to build, the freedom is yours to work in with your own budget. It truly has never been a better time to get that little bit of extra space that the residential block cannot provide, where you can spread your wings and let the children play plus room for the chooks and more. This is the place that can offer you the space and now is the time to grow your own veges, collect your own eggs, create a change for a more relaxed lifestyle.

These are the best acreage blocks available and your opportunity is limited, so get in quick while the Government Grants are on offer, for 1st home buyers and for those wanting to build a brand new home, you may

📏 1.24 ha

Price	SOLD for \$155,000
Property Type	Residential
Property ID	43
Land Area	1.24 ha

Agent Details

Mandy Ryan - 0411634732

Office Details

twenty20 Realty
SHOP 1 373 Kent St Maryborough,
QLD, 4650 Australia
(07) 4191 6800



be eligible for grants & incentives still available, inquire today. There are no acreage blocks this close to town that boast the elevation and breezes that are available at Paulin Park Place. Blocks range in size from 1ha to 1.42ha, so talk to your builder today. Bitumen road frontage, underground power, phone and culverts in place, this is the ideal location for a rural residential lifestyle.

The above information provided has been furnished to us by the vendor/s. We have not verified whether or not that information is accurate and do not have any belief in one way or the other in its accuracy. We do not accept any responsibility to any person for its accuracy and do no more than pass it on. All interested parties should make and rely upon their own inquiries in order to determine whether or not this information is in fact accurate.